



Ten Story 180,000 SF Multi-tenant Office Building

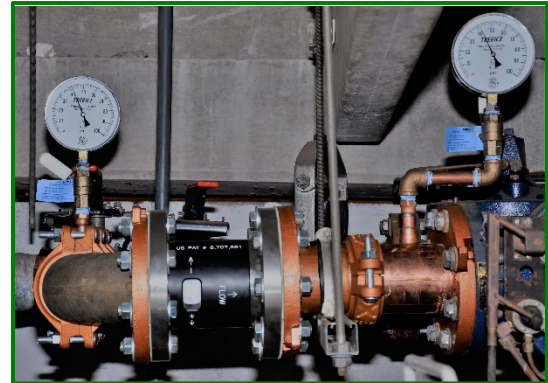
The Adjustable Flow Management Valve

www.smartwatervalve.com

Executive Summary: The valve produced a 39% reduction in the average water/sewer bill and a 37% reduction in the gallons per day used during a three month YOY test period.

The valve is modulating both the rate of change in the pressure drop as the clay valve opens and drops the water into an open tank. The meter's cavitation much less with the Smart Water Valve. The results were greater than we anticipated.

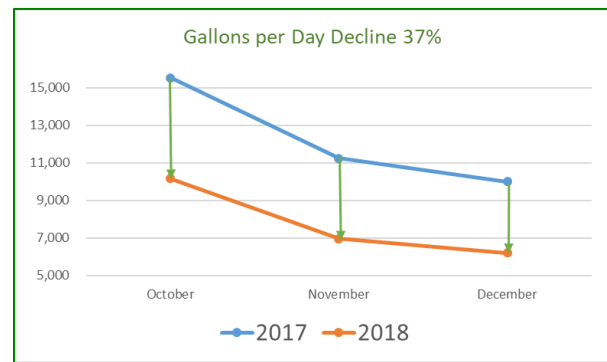
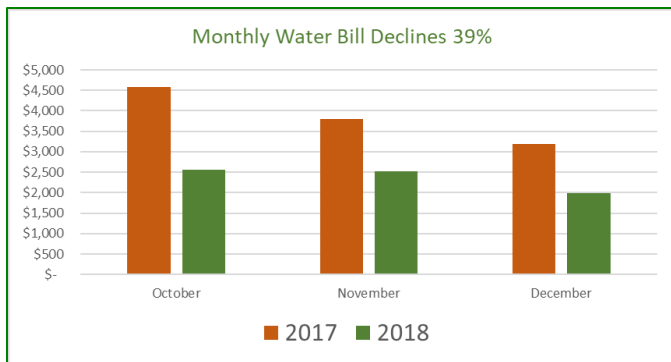
The irrigation meter indicated similar attractive savings but irrigation meters can be influenced by changes in scheduling whereas an office building's tenants tend to have more consistent water consumption patterns.



4" Valve – 37 to 39% Savings

- Three-month sample: Oct, Nov, Dec 2018 vs.2017
- Average Daily Usage Reduction: 37%
- Average Bill Reduction: 39%
- Estimated Payback = <12 months
- \$.10/SF/Year reduction in water & sewer cost

4" Smart Water Valve	2017	2018	2017	2018
Main Meter	Cost/month	Cost/month	Gallons/day	Gallons/day
October	\$ 4,583	\$ 2,569	15,536	10,174
November	\$ 3,805	\$ 2,526	11,250	6,970
December	\$ 3,182	\$ 1,992	10,000	6,207
Average	\$ 3,857	\$ 2,363	12,262	7,784
YOY Pct Reduction		-39%		-37%



2" Valve for Irrigation – 40% Savings

- Two-month sample: June, July 2017 vs. June, July 2018
- Average Daily Usage Reduction: 45%
- Average Bill Reduction: 40%
- Estimated Payback = <12 months

